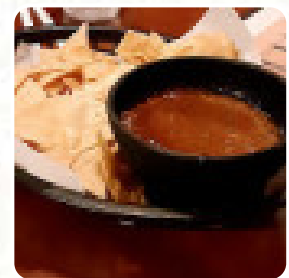
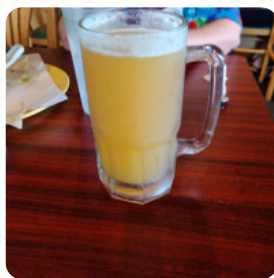




Rojas Mexicano Menu

<https://menuweb.menu>

877 E Enterprise Dr, Pueblo, 81007-1476, United States Of America, Pueblo County
+17196479832



Here you can find the [menu](#) of **Rojas Mexicano** in Pueblo County. At the moment, there are **18** menus and drinks on the food list.

Rojas Mexicano Menu



Side Dishes

RICE

Drinks

DRINKS

Sauces

SALSA

Restaurant Category

MEXICAN

These Types Of Dishes Are Being Served

QUESADILLAS

TUNA STEAK

CHICKEN

MEAT

Mexican Dishes

TACO

TACOS

CHICKEN ENCHILADAS

ENCHILADAS

FAJITAS

Ingredients Used

CHILI

PORK MEAT

AVOCADO

BEANS

SHRIMP

Rojas Mexicano

877 E Enterprise Dr, Pueblo,
81007-1476, United States Of
America, Pueblo County

Opening Hours:

Monday 11:00-21:00
Tuesday 11:00-21:00
Wednesday 11:00-21:00
Thursday 11:00-21:00
Friday 11:00-21:00
Saturday 11:00-21:00
Sunday 11:00-21:00

Made with menuweb.menu

