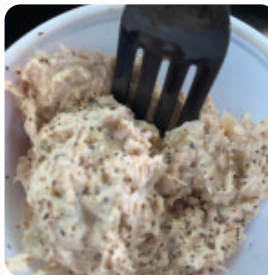




## ***Lou's Giant Subs Deli Menu***

<https://menuweb.menu>

1721 N Dixie Hwy, Pompano Beach I-33060-5248, United States  
+19549469600 - <http://www.lousgiantsubs.com/>



A comprehensive [menu](#) of Lou's Giant Subs Deli from Pompano Beach covering all **19** dishes and drinks can be found here on the card.

# Lou's Giant Subs Deli Menu



## Salads

POTATO SALAD

## Side Dishes

CLAM CHOWDER

## Dessert

COOKIE

## Toppings

TOPPINGS

## Restaurant Category

ITALIAN

## Soft Drinks

COKE

PEPSI

COLA



## These Types Of Dishes Are Being Served

SALAD

TUNA STEAK

TURKEY

BREAD

MEAT

## Ingredients Used

PEANUT BUTTER

CHOCOLATE CHIP

BUTTER

TUNA

CHOCOLATE

CHEESE

# Lou's Giant Subs Deli

1721 N Dixie Hwy, Pompano  
Beach I-33060-5248, United  
States

### Opening Hours:

Monday 08:00 -20:00  
Tuesday 08:00 -20:00  
Wednesday 08:00 -20:00  
Thursday 08:00 -20:00  
Friday 08:00 -20:00  
Saturday 08:00 -20:00  
Sunday 10:00 -17:00

Made with [menuweb.menu](https://menuweb.menu)

 gallery image