

Customers:

Friday, March 12, 2021
Monday Hours: 5:00 pm — 10:00 pm
Other days hours will remain the same.

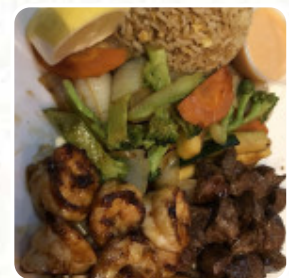
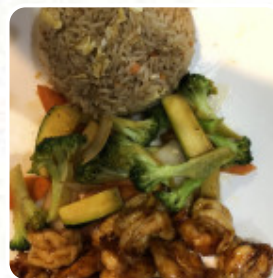
We apologize for any inconvenience
cause and thank you for your
support.



Kan's Sushi Steakhouse Menu

<https://menuweb.menu>

2115 Rayford Rd Ste 105, Spring, TX 77386, United States
+18328234881, +17133925206



A comprehensive [menu](#) of Kan's Sushi Steakhouse from Spring covering all 15 dishes and drinks can be found here on the card.

Kan's Sushi Steakhouse Menu



Sushi Rolls

SUSHI

Side Dishes

RICE

Chicken

GRILLED CHICKEN

Appetizer

TEMPURA

Dessert

CREPES

Japanese Specialties

VEGETABLE TEMPURA

Noodle

RAMEN

Special Noodles

UDON

Fried Rice

FRIED RICE

Restaurant Category

STEAKHOUSE

These Types Of Dishes Are Being Served

CHICKEN

NOODLES

Ingredients Used

MISO

PORK MEAT

SHRIMP

Kan's Sushi Steakhouse

2115 Rayford Rd Ste 105,
Spring, TX 77386, United States

Opening Hours:

Made with menuweb.menu

