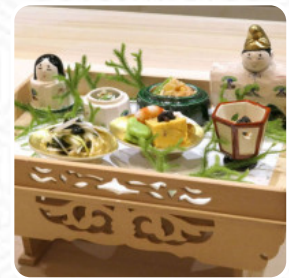




Gion Karyo メニュー

<https://menu.menu>

570-235 Gionmachi Minamigawa, Higashiyama Ward, Kyoto, 605-0074, Japan
+81753545314,+81755320025 - <https://www.karyo-kyoto.jp>



ここでは、KyotoにあるGion Karyoの[メニュー](#)を見ることができます。現在、**18**の料理、ディッシュ、メニューと飲み物がメニューにある、メニューに載っている、メニューにある。.

Cranberry's At Tilley Hall Menu



Salads

CHEF SALAD \$8.5

Breakfast

SIDE OF HOME FRIES \$3.0

American Food

EGGS BENEDICT

Bakery

BAGEL WITH CREAM CHEESE \$2.7

Coffee

ICED COFFEE

Wraps And Sandwiches

CREAMY PEANUT BUTTER AND JELLY \$5.0

Egg Sandwiches (All Day)

2 EGGS AND CHEESE \$3.2

These Types Of Dishes Are Being Served

DESSERTS

Gluten-Free, Salad And Vegetarian

CRANBERRY'S HOMEMADE \$11.0

Dessert

FRUIT SALAD \$3.5

MUFFINS

Hot Drinks

COFFEE

TEA

Ingredients Used

EGG

CRANBERRY

Sandwiches

TURKEY CLUB \$11.0

Cranberry's At Tilley Hall Menu



CORN BEEF REUBEN

\$10.5

TUNA MELT WITH SWISS CHEESE

\$9.3

Cranberry's At Tilley Hall

1 West Market Street, Town Of
Hyde Park, 12538, United States
Of America, Town of Hyde Park

Opening Hours:

Tuesday 07:00-16:00
Wednesday 07:00-16:00
Thursday 07:00-16:00
Friday 07:00-16:00
Saturday 07:00-16:00
Sunday 07:00-16:00

Made with menuweb.menu

