

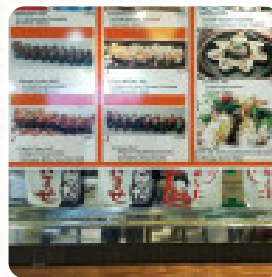


## ***Oshima Japanese Cuisine Menu***

<https://menuweb.menu>

3301 184th St SW, Lynnwood I-98037-4797, United States

**+14256403336**



**The Menu** of Oshima Japanese Cuisine from Lynnwood contains about **20** different menus and drinks. On average, you pay for a dish / drink about \$6.7.

# Oshima Japanese Cuisine Menu



## *Sushi Rolls*

SUSHI

## *Nigiri Sushi*

TUNA SUSHI \$3.5

## *Special Roll*

WASHINGTON ROLL \$9.0

## *Special Noodles*

UDON

## *Sushi - Vorspeisen*

SPICY SASHIMI BOWL \$10.5

## *Boxes*

TUNA SASHIMI \$6.5

## *Sashimi Selection*

SALMON SASHIMI \$5.8

## *Sushi Bar Entrees*

CHIRASHI

## *Fresh Fish Rolls*

HAWAIIAN ROLL \$8.5

## *Small Rice Bowls*

UNADON \$11.5

## *Sushi Exclusive (8Stk.)*

CRAZY SALMON SUSHI \$3.0

## *Sushi*

SASHIMI

SPICY TUNA ROLL \$5.0

CALIFORNIA ROLL \$4.0

## *Ingredients Used*

SCALLOPS

SCALLOP

TUNA

## *These Types Of Dishes Are Being Served*

SALAD

SPICY TUNA

SOUP

# *Oshima Japanese Cuisine Menu*



## *Oshima Japanese Cuisine*

3301 184th St SW, Lynnwood I-  
98037-4797, United States

**Opening Hours:**

Monday 10:30 -21:00  
Tuesday 10:30 -21:00  
Wednesday 10:30 -21:00  
Thursday 10:30 -21:00  
Friday 10:30 -21:00  
Saturday 10:30 -21:00  
Sunday 10:30 -21:00

Made with [menuweb.menu](https://www.menuweb.menu)

 gallery image

