

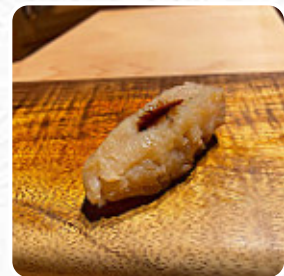


Sushi Sho Menu

<https://menuweb.menu>

383 Kalaimoku St, 96815, Honolulu, US, United States

(+1)8087299717 - <http://www.ritzcarlton.com/en/hotels/hawaii/waikiki/dining/sushi-sho>



A complete [menu](#) of Sushi Sho from Honolulu covering all 20 dishes and drinks can be found here on the food list.

Sushi Sho Menu



Entrées

SQUID

Sushi Rolls

SUSHI

Pizza

PIZZA HAWAII

Extras

SUSHI RICE

Sandwiches

CALIFORNIA SANDWICH

Seafood

OCTOPUS AND ORZO

Drinks

DRINKS

Maki Sushi

FUTOMAKI

Sushi Bar Entrees

CHIRASHI

Sides

WASABI

SOY SAUCE

These Types Of Dishes Are Being Served

FISH

DESSERTS

ICE CREAM

OYSTERS

Ingredients Used

VEGETABLES

GINGER

CHEESE

TOFU

SHRIMP

Sushi Sho

383 Kalaimoku St, 96815,
Honolulu, US, United States

Opening Hours:

Monday 17:00 -22:30
Tuesday 17:00 -22:30
Wednesday 17:00 -22:30
Thursday 17:00 -22:30
Friday 17:00 -22:30
Saturday 17:00 -22:30
Sunday 17:00 -22:30

Made with menuweb.menu

