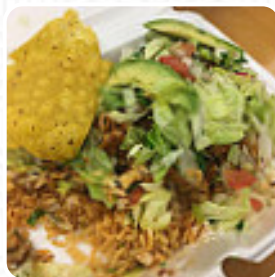




## ***Mary's Kitchen Menu***

<https://menuweb.menu>

310 N Main St, Mount Angel, USA, United States  
+19714048108 - <http://marys-kitchen.lany.io/>



On this webpage, you can find the **complete menu** of Mary's Kitchen from Mount Angel. Currently, there are **20** courses and drinks available.

# Mary's Kitchen Menu



## Starters & Salads

POTATO CHIPS

## Sauces

SALSA

## Burritos

CHICKEN BURRITO

## Tacos

CHICKEN TACOS

## Egg Dishes

OMELETTE

## Beef Steak

ASADO

## Restaurant Category

MEXICAN

## Ingredients Used

BEEF

CHORIZO

## These Types Of Dishes Are Being Served

CHICKEN

ROAST BEEF

MEAT

OYSTERS

QUESADILLAS

## Mexican Dishes

BURRITOS

GRILLED MEAT

ENCHILADAS

BURRITO

TACOS

TACO

## Mary's Kitchen

310 N Main St, Mount Angel,  
USA, United States

### Opening Hours:

Monday 09:00-18:00

Tuesday 09:00-18:00

Wednesday 09:00-18:00

Thursday 09:00-18:00

Friday 09:00-18:00

Made with [menuweb.menu](https://www.menuweb.menu)

 gallery image

