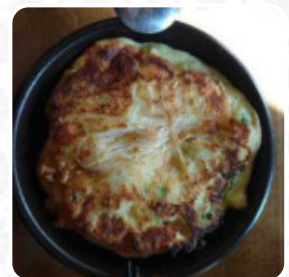
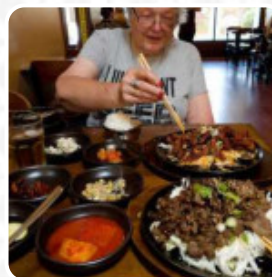




Pyeong Chang Tofu Menu

<https://menuweb.menu>

Pyeong Chang Tofu House, 1269 University Ave, Berkeley, CA 94702, USA, United States
+15105489781



The restaurant from Berkeley offers **22** different **dishes and drinks** on [the menu](#) at an average price of \$17.9.

Pyeong Chang Tofu Menu



Soups

SEAFOOD TOFU SOUP \$15.0

Bowls

BI BIM BOP \$16.0

Chicken Wings

WINGS

Soups & Noodles

ZARU SOBA \$16.0

Cold Noodles

KIMCHI BI BIM GUK SU \$17.0

Soups And Stews

ORIGINAL TOFU SOUP \$14.0

Vegetarian And Vegan Menu

MUNG BEAN PANCAKE \$12.0

Eggs Etc.

KIM CHI PANCAKE \$13.0

Specials

BBQ BEEF RIBS (GAL BI) \$30.0

BBQ BUL GO GI \$29.0

Dessert

PANCAKE

CREPES

Mixed Rice

BIBIMBAP

YOUNG RADISH BI BIM BAP \$17.0

Restaurant Category

GLUTEN FREE

VEGAN

These Types Of Dishes Are Being Served

SOUP

FISH

Ingredients Used

GARLIC

BEEF

KIMCHI

TOFU

Pyeong Chang Tofu Menu



Pyeong Chang Tofu

Pyeong Chang Tofu House, 1269
University Ave, Berkeley, CA
94702, USA, United States

Opening Hours:

Made with menuweb.menu

