

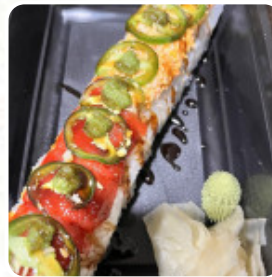
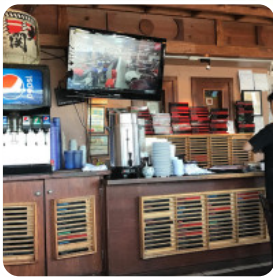


Sapporo Sushi Menu

<https://menuweb.menu>

Pacific Highway East, Fife, 98424, United States Of America

+12539225656 - <https://sapporojapaneserestaurant.menu11.com/>



The Card of Sapporo Sushi from Fife contains about **24** different dishes and drinks. On average, you pay for a dish / drink about \$11.9.

Sapporo Sushi Menu



Non Alcoholic Drinks

WATER

Sushi Rolls

SUSHI

Mains

CHICKEN AND GYOZA \$10.0

Side Dishes

RICE

Appetizer

TEMPURA

Bento Box

DINNER BENTO BOX \$15.5

Bento

LUNCH MIX \$15.0

American

CHICKEN AND RIBS \$15.0

Japanese Specialties

MISO SOUP

Special Noodles

UDON

Fried Rice

FRIED RICE \$10.0

Sushi Lunch

NIGRI MIX \$13.0

Hot Drinks

TEA

Asian

GYOZA \$5.0

Teriyaki Combo

CHICKEN AND EGGROLL \$9.0

Mongolian Food

MONGOLIAN BEEF

Sushi

SASHIMI

SASHIMI LUNCH \$18.0

Ingredients Used

MISO

CHICKEN TERIYAKI \$8.5

These Types Of Dishes Are Being Served

SALAD

SOUP

FISH

CHICKEN

Sapporo Sushi Menu



Sapporo Sushi

Pacific Highway East, Fife,
98424, United States Of America

Opening Hours:

Monday 10:30 -21:00

Tuesday 10:30 -21:00

Wednesday 10:30 -21:00

Thursday 10:30 -21:00

Friday 10:30 -21:00

Saturday 10:30 -21:00

Made with menuweb.menu

