

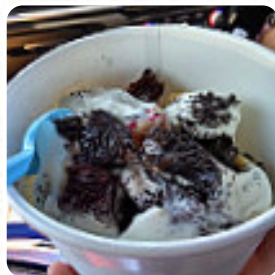


Aloha Yogurt Menu

<https://menuweb.menu>

219 E Baseline Rd #5, Tempe, United States

(+1)4802895238 - <http://www.alohayogurt.com/>



The **menu of Aloha Yogurt** from Tempe includes 25 dishes. On average, **dishes or drinks on [the menu](#)** cost about \$5.1. The categories can be viewed on the menu below. Aloha Frozen Yogurt has garnered a passionate following for its superior quality and welcoming atmosphere. Renowned for its array of fresh flavors and high-quality toppings, it stands out from generic chains. The attentive staff create a friendly experience, emphasizing customer service without compromising comfort. With options like vegan and sugar-free, Aloha caters to various dietary preferences, making it a local favorite. Patrons rave about unique flavors and creative combinations, while the shop's cleanliness and inviting ambiance enhance the overall experience. For those seeking a delightful treat, Aloha Frozen Yogurt remains the top choice in the valley.

Aloha Yogurt Menu



Smoothies

SHAKA BERRY SMOOTHIE \$7.0

Chicken

PINEAPPLE CHICKEN

Dessert

COOKIE

Frozen Yogurt

TO GO PINTS \$5.0

Toppings

TOPPINGS

Hot Drinks

COFFEE

Coffee

HOT COFFEE

Poorboy's Omelets

BACON CHEESE \$2.0

Dog-Urt

CHICKEN CARROTS \$2.0

Uncategorized

SEASONAL SMOOTHIE \$7.0

Popular Items

FROYO TACO \$4.5

FROYO SAMMY \$4.5

Restaurant Category

VEGAN

DESSERT

COLD BREW COFFEE

SHAKEN COLD BREW COFFEE \$5.0

GROWLER COLD BREW COFFEE (32 OZ.) \$13.0

BLACK COLD BREW COFFEE \$4.0

Ingredients Used



YOGURT

BANANA

FRUIT

HONEY

PEANUT BUTTER \$2.0

CHOCOLATE

BUTTER

RASPBERRY

Aloha Yogurt Menu



Aloha Yogurt

219 E Baseline Rd #5, Tempe,
United States

Opening Hours:

Tuesday 02:00 -22:00
Wednesday 02:00 -22:00
Thursday 02:00 -22:00
Friday 12:00 -22:00
Saturday 12:00 -22:00
Sunday 12:00 -22:00

Made with menuweb.menu

