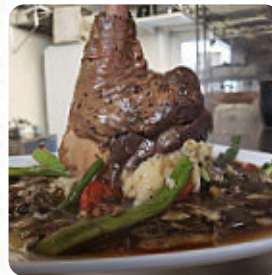




Chef's Hat Cafe Menu

<https://menuweb.menu>

3063 Church St (at Hwy 42), Ephraim, Wisconsin, USA, 54211, United States
(+1)9208542034 - <http://chefshatdoorcounty.com>



On this website, you can find the **complete [menu](https://menuweb.menu) of Chef's Hat Cafe** from Ephraim. Currently, there are **25** dishes and drinks up for grabs. Nestled in Door County, this charming American café boasts a relaxed atmosphere with inviting outdoor seating and stunning water views. Renowned for its friendly staff and consistently delicious fare, diners can enjoy a selection of breakfast, lunch, and dinner options, including a vegan burger and customizable salads. While the vegan menu is somewhat limited—lacking appetizers and desserts—the fresh and flavorful ingredients make up for it. Patrons rave about the exceptional service and dishes like the breakfast bowl, bruschetta, and spinach quesadilla. This hidden gem promises delightful experiences for both casual diners and food enthusiasts alike.

Chef's Hat Cafe Menu



Smoothies

SMOOTHIE

Soups

TOMATO BASIL SOUP

Pasta

PASTA ALFREDO

Burger

BEYOND BURGER

Snacks

BRUSCHETTA

Sandwiches

HAM AND CHEESE

Wraps

VEGGIE WRAP

From The Grill

RIBS

Specialty Beverages

STRAWBERRY SMOOTHIE

French

CROISSANT

Dessert

CHOCOLATE CROISSANT

TIRAMISU

These Types Of Dishes Are Being Served



SALAD

TOSTADAS

SOUP

PASTA

WRAP

Ingredients Used



PARMESAN

SHRIMP

SPINACH

GORGONZOLA

VEGETABLES

CHOCOLATE

HAM

CHEESE

Chef's Hat Cafe Menu



Chef's Hat Cafe

3063 Church St (at Hwy 42),
Ephraim, Wisconsin, USA,
54211, United States

Made with menuweb.menu

Opening Hours:

Monday 08:00-14:00 17:00-20:00
Tuesday 08:00-14:00 17:00-20:00
Wednesday 08:00-14:00 17:00-20:00
Thursday 08:00-14:00 17:00-20:00
Friday 08:00-14:00 17:00-20:00
Saturday 08:00-20:00
Sunday 08:00-14:00 17:00-20:00

