

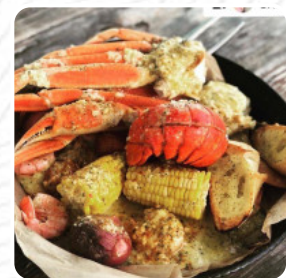


# Melbourne Seafood Station Menu

<https://menuweb.menu>

865 Palm Bay Rd NE, Melbourne, United States

(+1)3213273727 - <https://www.melbourneseafoodstation.com>



On this site, you can find the **complete menu** of Melbourne **Seafood Station** from Melbourne. Currently, there are **27** courses and drinks up for grabs.

# Melbourne Seafood Station Menu



## Drinks

BEER

## Seafood

LOBSTER TAIL

## Hot Drinks

TEA

## Bread

GARLIC BREAD

## Indian Rice

GARLIC RICE

## Restaurant Category

MEXICAN

## Side Dishes



GRITS

CLAM CHOWDER

CORN ON THE COB

MEXICAN RICE

## These Types Of Dishes Are Being Served

BREAD

TUNA STEAK

PASTA

FISH

TOSTADAS

LOBSTER

## Ingredients Used



SCALLOPS

CORN

SHRIMPS

SAUSAGE

POTATOES

SHRIMP

GARLIC

SALMON

BUTTER

BROCCOLI

SEAFOOD

---

# Melbourne Seafood Station

865 Palm Bay Rd NE,  
Melbourne, United States

**Opening Hours:**  
Monday 11:00-21:00  
Tuesday 11:00-21:00  
Wednesday 11:00-21:00  
Thursday 11:00-21:00  
Friday 11:00-21:00  
Saturday 11:00-21:00  
Sunday 11:00-21:00

Made with [menuweb.menu](https://menuweb.menu)

