

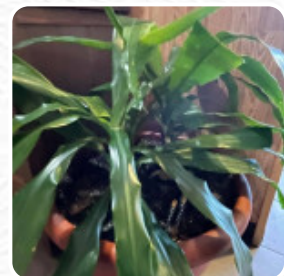
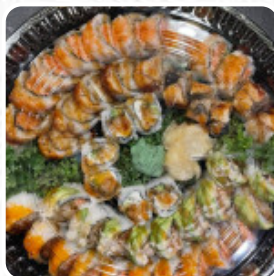


## Sakura Japanese Menu

<https://menuweb.menu>

1437 Sams Dr, Chesapeake, United States

+17574104577



**The menu of Sakura Japanese from Chesapeake** comprises about **229** different dishes and drinks. On average you pay about \$12.7 for a dish / drink. Sakura Japanese Restaurant, located in Chesapeake, VA, is a highly-rated culinary gem boasting an impressive average rating of 4.8 stars. This beloved establishment is open today from 11:00 AM to 9:30 PM, inviting you to savor an array of authentic Japanese cuisine perfect for any occasion, whether you're dining as a couple or hosting a larger gathering. Reservations are recommended—simply call (757) 410-4577 to secure your table. Sakura not only caters to sushi enthusiasts but also offers an array of vegetarian options, ensuring there's something for everyone. Complement your meal with one of their delightful cocktails. If you're looking for similar dining experiences, don't miss out on exploring Pier 88 and Shawarma Shack VA. Have you enjoyed a meal at Sakura? We would love to hear your thoughts—leave a review and share your experience with others!.

# Sakura Japanese Menu



## Sashimi

70. OCTOPUS \$3.8

## Thai

THAI TEA \$6.0

## Salad

6. MANGO SALAD \$7.0

## Maki

57. TUNA AND AVOCADO ROLL \$8.0

## Sandwiches

10. TUNA STEAK \$13.0

## Seafood

77. SHRIMP \$3.8

## Side Dishes

RICE

## Side Orders

SIDE OF EEL SAUCE \$0.6

## Sauces

BBQ

## Rolls

62. AVOCADO ROLL \$6.0

## Soft Drinks

COKE

## Fried Rice

34. WHITE RICE \$6.0

## Hosomaki

83. SPICY TUNA \$3.8

## Signature Rolls

VOLCANO ROLL

## Main Menu

10. SALMON STEAK \$13.0

## Lo Mein

74. CRABMEAT \$3.8

## Beverages

CHAI TEA \$6.0

## Hot Drinks

TEA

## Soup And Salads

7. KANI SALAD \$8.0

## Popular Items

TARO TEA \$6.0

## Sushi Bar Entree

110. CHIRASHI \$25.0

## Sushi Appetizers

11. TUNA TATAKI \$14.0

# Sakura Japanese Menu



## Vegetarian Roll

60. CUCUMBER ROLL \$5.5

## Cut Rolls

43. TUNA ROLL \$7.0

## Rolls And Hand Rolls

42. SALMON ROLL \$7.0

## Roll Or Hand Rolls

54. BOSTON ROLL \$8.0

## Chef's Special Rolls

S5. GODZILLA ROLL \$14.0

## Small Special Rolls

S1. AMERICAN DREAM ROLL \$14.0

## O's Yummy Special Roll

S3. CHESAPEAKE BAY ROLL \$12.0

## Sides (L)

SIDE OF SALMON SAUCE \$0.6

## Teriyaki Dinner Entree

99. SHRIMP TERIYAKI \$21.0

## Chef's Special Roll

S8. GODZILLA ROLL \$14.0

## Soup, Salad, And Chili

MISO SOUP \$3.0

## Uncategorized

LARGE DRINK \$4.0

## Soups

1A. CLEAR SOUP \$3.0

2. SEAFOOD SOUP \$11.0

## Sushi Rolls

SUSHI

36. CALIFORNIA ROLL \$7.0

## Appetizer

TEMPURA

16. EDAMAME \$6.0

## Tea

GREEN TEA

BOBA MILK TEA \$6.8

## Side Options

SIDE OF SPICY MAYO \$0.6

SIDE OF TERIYAKI SAUCE \$0.6

## Asian

GYOZA

SPRING ROLL

## Roll And Hand Roll

37. SPICY SALMON ROLL \$7.0

38. SPICY TUNA ROLL \$7.0

## Soup & Salad

4. AVOCADO SALAD \$7.0

# Sakura Japanese Menu



5. SEAWEED SALAD \$7.0

## Lunch Sushi Box

LUNCH SUSHI BOX 1 \$14.0

LUNCH SUSHI BOX 2 \$17.0

## Sakura Love Boats

101. LOVE BOAT \$89.0

102. SAKURA BOAT \$159.0

## Salads

HOUSE SALAD

3. HOUSE SALAD \$4.0

13. CUCUMBER SALAD \$6.0

## Sushi

SASHIMI

S17. RAINBOW ROLL \$14.0

S31. VOLCANO ROLL \$14.0

## Japanese Specialties

MISO SOUP

CHICKEN TERIYAKI

SAKE

## Entrées

SPRING ROLLS

18. YAKITORI \$9.0

19. BBQ SQUID \$10.0

23. TATSUTA AGE \$10.0

27. SHRIMP TEMPURA \$10.0

## Drinks

DRINKS

JAPANESE DRINK HOME MAKE \$5.0

FRUIT TEA AND CARBONATED BEVERAGE \$5.5

JAPANESES SODA \$4.0

LARGE SODA \$4.0

## Soups And Salad

8. SAKURA SUNOMONO \$13.0

9. TSUNAMI TUNA \$14.0

9. TSUNAMI SALMON \$14.0

11. SALMON TATAKI \$14.0

12. WHITE TUNA MARTINI \$14.0

## These Types Of Dishes Are Being Served

SALAD

FISH

SPICY TUNA

SOUP

CHICKEN

TUNA STEAK

## Sushi And Sashimi

103. SUSHI REGULAR \$24.0

104. SUSHI DELUXE \$26.0

105. SASHIMI REGULAR \$26.0

106. SASHIMI DELUXE \$29.0

107. SUSHI SPECIAL \$38.0

108. SUSHI AND SASHIMI SPECIAL \$40.0

109. ROLL COMBINATION \$44.0

111. UNAGI DON \$25.0

# Sakura Japanese Menu



## Vegetable Roll

61. YASAI ROLL	\$7.0
63. CUCUMBER AND AVOCADO ROLL	\$7.0
64. MANGO ROLL	\$6.0
65. FUTOMAKI ROLL	\$8.0
66. SWEET POTATO TEMPURA ROLL	\$6.5
67. PEANUT AND AVOCADO ROLL	\$8.0
68. SWEET DRIED TOFU ROLL	\$8.0
69. MANGO AND AVOCADO ROLL	\$8.0

## Ingredients Used

TUNA

RED SNAPPER

MISO

SHRIMP

EDAMAME

EEL

MACKEREL

LETTUCE

## Noodles And Rice

30. SHRIMP TEMPURA UDON SOUP	\$13.0
31. SAKURA FRIED RICE WITH CHICKEN	\$12.0
31. SAKURA FRIED RICE WITH SHRIMP	\$12.5
32. YAKI SOBA	\$14.0
33. YAKI UDON	\$14.0
35. SUSHI RICE	\$8.0
35. SAKURA FRIED RICE WITH BEEF	\$10.0
38. SUSHI RICE	\$10.0

36. YAKI SOBA WITH BEEF	\$10.0
-------------------------	--------

## Lunch Kitchen

LK1. CHICKEN TERIYAKI LUNCH	\$14.0
LK1. BEEF TERIYAKI LUNCH	\$14.0
LK2. SHRIMP TERIYAKI LUNCH	\$14.0
LK3. SALMON TERIYAKI LUNCH	\$14.0
LK3. TUNA TERIYAKI LUNCH	\$14.0
LK4. SHRIMP TEMPURA LUNCH	\$14.0
LK5. SEAFOOD KATSU LUNCH	\$14.0
LK6. CHICKEN KATSU DON LUNCH	\$14.0
LK7. TOKYO CHICKEN LUNCH	\$14.0
LK8. CHICKEN STICKS LUNCH	\$14.0
LK9. SHORT BEEF RIBS LUNCH	\$14.0

## Kitchen

14. AGED TOFU	\$6.0
15. GYOZA DUMPLING	\$7.5
17. JAPANESE SPRING ROLL	\$6.0
20. FRIED SPIDER	\$11.0
21. SAKURA SHORT BEEF RIBS	\$14.0
22. SHUMAI SHRIMP DUMPLINGS	\$7.5
24. SWEET POTATO TEMPURA	\$7.0
25. BROCCOLI TEMPURA	\$7.0
26. MIXED VEGETABLE TEMPURA	\$8.0
28. CRABMEAT TEMPURA	\$8.0
29. SNAPPER TEMPURA	\$8.0
27. TATSUTA AGE	\$7.0

## Classic Rolls

39. SPICY CRABMEAT ROLL	\$7.0
40. SPICY CALIFORNIA ROLL	\$7.0
41. WHITE TUNA ROLL	\$7.0



# Sakura Japanese Menu



44. SEXY SNAPPER ROLL	\$7.0
45. SQUID ROLL	\$7.0
46. DYNAMITE ROLL	\$8.0
47. SHRIMP TEMPURA ROLL	\$8.0
48. CHICKEN TERIYAKI ROLL	\$7.5
49. BBQ EEL ROLL	\$8.0
50. BEACH ROLL	\$9.0
51. CRABMEAT ROLL	\$7.0
52. PHILLY ROLL	\$9.0
53. YELLOWTAIL ROLL	\$9.0
55. DUPER ROLL	\$10.0
56. HURRICANE ROLL	\$10.0
58. SALMON AND AVOCADO ROLL	\$8.0
59. ALASKA ROLL	\$9.0

## Entrees Kitchen Dinner

91. CHICKEN TERIYAKI	\$19.0
92. STEAK TERIYAKI	\$22.0
93. TUNA TERIYAKI	\$18.0
93. SALMON TERIYAKI	\$24.0
94. TOFU TERIYAKI	\$16.0
95. SHRIMP TEMPURA	\$21.0
96. VEGETABLE TEMPURA	\$17.0
97. CHICKEN KATSU	\$19.0
100. BEEF RIBS	\$22.0
100A. CHICKEN AND BEEF TERIYAKI	\$25.0
100B. CHICKEN AND SHRIMP TERIYAKI	\$24.0
100C. BEEF AND SHRIMP TERIYAKI	\$26.0
101A. CHICKEN HIBACHI	\$18.0
101B. SHRIMP HIBACHI	\$22.0
101C. STEAK HIBACHI	\$23.0

102A. CHICKEN AND SHRIMP HIBACHI	\$26.0
102B. BEEF AND SHRIMP HIBACHI	\$27.0
99. GOLDEN FISH	\$16.0

## A La Carte Sushi And Sashimi

68. RED TUNA	\$3.8
69. SALMON ROSES A LA CARTE	\$2.5
70. CALAMARI ROSES A LA CARTE	\$2.5
71. SQUID	\$3.8
72. SNAPPER	\$3.8
73. SALMON	\$3.8
75. WHITE TUNA	\$3.8
76. MACKEREL	\$3.8
78. EGG	\$3.8
79. TAMAGO	\$2.8
80. IKURA	\$3.8
81. BBQ EEL	\$3.8
82. SPICY SALMON	\$3.8
84. SPICY CRABMEAT	\$3.8
85. RED CLAM	\$3.8
86. SEAWEED	\$3.8
87. CONCH	\$3.8
88. YELLOWTAIL	\$3.8
89. TOBIKO	\$3.8
90. OIL FISH	\$3.8
100. BLUE FIN FISH	\$2.8

## Sakura Special Roll

S2. CHEF'S SPECIAL ROLL	\$14.0
S3. CRYSTAL ROLL	\$14.0
S4. CHISTMAS TREE ROLL	\$14.0

# Sakura Japanese Menu



S5. DANCING EEL ROLL	\$14.0	S18. RED AND WHITE ROLL	\$14.0
S5. DANCING TUNA ROLL	\$14.0	S19. PINK LADY ROLL	\$15.0
S6. FUJI ROLL	\$14.0	S20. ROCK'S ROLL	\$13.0
S7. GREENBRIER ROLL	\$14.0	S21. SAKURA ROLL	\$14.0
S9. GOLDEN LOBSTER ROLL	\$14.0	S22. SEASON DRAGON ROLL	\$15.0
S10. ICE ISLAND ROLL	\$15.0	S23. SEXY BEACH ROLL	\$14.0
S11. IRON MAN ROLL	\$14.0	S24. SPICY FRIEND ROLL	\$14.0
S12. KILL BILL ROLL	\$14.0	S25. SPICY SAKURA ROLL	\$14.0
S13. LUCKY STAR ROLL	\$15.0	S26. SPICY GIRL ROLL	\$14.0
S14. MANGO HAWAII ROLL	\$14.0	S27. SPIDER MAN ROLL	\$14.0
S15. MEXICAN ROLL	\$15.0	S28. SUPER MAN ROLL	\$15.0
S16. OYUMMY ROLL	\$14.0	S29. TROPICAL ROLL	\$15.0
S16A. CANDY ROLL	\$14.0	S30. TWIN TOWER ROLL	\$14.0
S16A. YAMATO ROLL	\$12.0	S32. WHITE HOUSE ROLL	\$14.0
S18. CANDY ROLL	\$14.0	S32A. EARTHQUAKE ROLL	\$15.0

## Sakura Japanese

1437 Sams Dr, Chesapeake,  
United States

### Opening Hours:

Monday 11:00 -21:30  
Tuesday 11:00 -21:30  
Wednesday 11:00 -21:30  
Thursday 11:00 -21:30  
Friday 11:00 -21:30  
Saturday 11:00 -21:30  
Sunday 11:00 -21:30

Made with [Menu](#)

