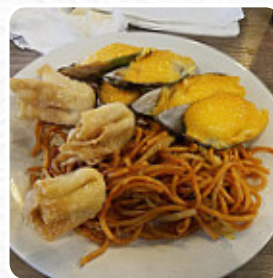




Hibachi Super Buffet Menu

<https://menuweb.menu>

1164 W Southern Ave, Mesa, AZ 85210, United States
+14809620888 - <http://hibachigrillmesa.com/>



The Menu of Hibachi Super Buffet from Mesa includes about **36** different meals and drinks. On average, you pay for a dish / drink about \$4.1.

Hibachi Super Buffet Menu



Soups

EGG DROP SOUP \$1.5

Sushi Rolls

SUSHI

Main Courses

PORK FRIED RICE \$5.8

Side Dishes

FRENCH FRIES

Starters & Salads

FRENCH FRIES

Appetizer

GARLIC SHRIMP

Asian

WONTON SOUP \$1.5

Vegetarian

GREEN BEANS

VEGETABLE FRIED RICE \$5.3

Chicken Dishes

CHICKEN IN CURRY SAUCE \$7.0

SWEET AND SOUR CHICKEN \$7.0

Luncheon Special

SWEET AND SOUR CHICKEN LUNCHEON SPECIAL \$4.3

MOO GOO GAI PAN LUNCHEON SPECIAL \$4.3

Entrées

8 PIECES FRIED WONTON \$3.6

2 PIECES EGG ROLL \$1.3

NUGGETS

Restaurant Category

DESSERT

FRENCH

VEGETARIAN

These Types Of Dishes Are Being Served

ICE CREAM

NOODLES

FISH

PIZZA

SALAD

CHICKEN

DESSERTS

Ingredients Used



BEANS

GARLIC

BEEF

SEAFOOD

FRUIT

EGG

HAM

PORK MEAT

SHRIMP

COCONUT

Hibachi Super Buffet Menu



Hibachi Super Buffet

1164 W Southern Ave, Mesa, AZ
85210, United States

Opening Hours:

Monday 11:00 -21:30
Tuesday 11:00 -21:30
Wednesday 11:00 -21:30
Thursday 11:00 -21:30
Friday 11:00 -22:00
Saturday 11:00 -22:00
Sunday 11:00 -21:30

Made with menuweb.menu

