

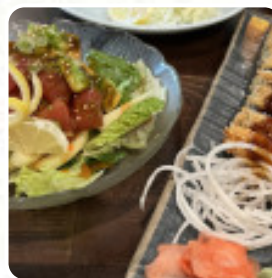


Naoki Japanese Cuisine Menu

<https://menuweb.menu>

3360 Dixie Hwy NE, Palm Bay, United States

+13219512710



Here you will find the [menu](#) of **Naoki Japanese Cuisine** in Palm Bay. At the moment, there are **41** meals and drinks on the menu. Discover **NAOKI JAPANESE CUISINE** in Palm Bay, FL, a highly regarded Japanese restaurant with an impressive average rating of 4.6 stars. Guests rave about the exquisite dishes and diverse vegetarian options available, making it a perfect destination for all palates. Open daily from 5:00 PM to 9:00 PM, **NAOKI** invites you to call (321) 951-2710 to check table availability or make a reservation. Additionally, indulge in their exceptional tea selection that perfectly complements your meal. If you're seeking similar dining experiences, don't miss The Wet Spot and Anna's Vegan Plate. Have you dined with us? We'd love to hear your feedback!.

Naoki Japanese Cuisine Menu



Non Alcoholic Drinks

WATER

Entrées

TAKOYAKI

Sushi Rolls

SUSHI

Pizza

FUSION PIZZA

Seafood

CALAMARI

Side Dishes

RICE

Sushi Nigiri

MAGURO

Sushi

SASHIMI

Drinks

DRINKS

Chicken

CHICKEN KATSU

Sauces

MAYO

Appetizer

SESAME CHICKEN

Indian

CHICKEN CURRY

Fish

SALMON ROLL

Japanese Specialties

SAKE

Noodle

RAMEN

Toppings

TOPPINGS

Asian

GYOZA

Sides

WASABI

Salads

SALAD

SEAFOOD SALAD

Hot Drinks

HOT TEA

TEA

Naoki Japanese Cuisine Menu



These Types Of Dishes Are Being Served

SOUP

SALAD

MEAT

SPICY TUNA

CHICKEN

APPETIZER

NOODLES

FISH

Ingredients Used

TUNA

SEAFOOD

SCALLOP

GINGER

EDAMAME

SHRIMP

CHEESE

PORK MEAT

MISO

FRUIT

Naoki Japanese Cuisine

3360 Dixie Hwy NE, Palm Bay,
United States

Opening Hours:

Monday 05:00-21:00

Tuesday 05:00-21:00

Wednesday 05:00-21:00

Thursday 05:00-21:00

Friday 05:00-21:00

Saturday 05:00-21:00

Made with [Menu](#)

