

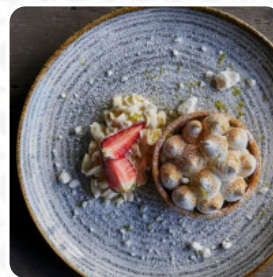


Sawyers And Grill Menu

<https://menuweb.menu>

Wales One Business Park, Monmouthshire, United Kingdom

+441633880741 - <http://www.ty-hotels.com/destinations/magor/dining/>



Here you will find the [menu](#) of **Sawyers And Grill** in Monmouthshire. At the moment, there are **81** dishes and drinks on the menu. Head to **Sawyers** for a delicious selection of diner-style burgers, hot dogs, mac 'n' cheese, loaded nachos, burritos, ribs, and more. This American-inspired family dining destination offers something for everyone, with a menu that is a true taste sensation!.

Siam Square Menu



Non Alcoholic Drinks

WATER

Entrées

SPRING ROLLS

Soups

TOM YUM

Gnocchi

GNOCCHI

Seafood

CALAMARI

Side Dishes

RICE

Drinks

DRINKS

Rice

VEG FRIED RICE

Sauces

PEANUT SAUCE

Starters

FRIED DUMPLINGS

Soft Drinks

ICE TEA

Asiatische Gerichte - Huhn

THAI CURRY

Salad And Soup

TOM YUM SOUP

Wine

CHARDONNAY

Duck Meat

CRISPY DUCK

Asian Specialties

SATAY

Thai Dishes

PAD THAI

Beverages

THAI ICED TEA

Pad Thai Dishes

CHICKEN PAD THAI

Curries From Around The World

PHANAENG

Chicken

PINEAPPLE CHICKEN

DRUNKEN CHICKEN

Siam Square Menu



Rice Dishes

VEG. FRIED RICE

EGG FRIED RICE

Curries

MASSAMAN CURRY

PANANG CURRY

Asian

SPRING ROLL

WONTON SOUP

Indian

CHICKEN CURRY

YELLOW CURRY

CHICKEN CURRY

Fried Rice

THAI FRIED RICE

PINEAPPLE FRIED RICE

FRIED RICE

Hot Drinks

COFFEE

TEA

HOT TEA

Restaurant Category

VEGAN

VEGETARIAN

GLUTEN FREE

Thai

THAI TEA

GREEN CURRY

CHICKEN SATAY

RED CURRY

THAI CHICKEN

These Types Of Dishes Are Being Served

SOUP

FISH

CHICKEN

MEAT

NOODLES

Ingredients Used

SALMON

TOFU

EGG

PRAWNS

BROCCOLI

DUCK

BEEF

VEGETABLES

SEAFOOD

CHILI

CHEESE

WHITE RICE

PORK MEAT

SHRIMP

Opening Hours:
Monday 11:30-21:00
Tuesday 11:30-21:00
Wednesday 11:30-21:00
Thursday 11:30-22:00
Friday 12:00-22:00
Saturday 12:00-21:00

Index	10-11
General Staff	10-11
Major Staff	10-11
Staff "A"	10-11
Staff "B"	10-11
Staff "C"	10-11
Staff "D"	10-11
Staff "E"	10-11
Staff "F"	10-11
Staff "G"	10-11
Staff "H"	10-11
Staff "I"	10-11
Staff "J"	10-11
Staff "K"	10-11
Staff "L"	10-11
Staff "M"	10-11
Staff "N"	10-11
Staff "O"	10-11
Staff "P"	10-11
Staff "Q"	10-11
Staff "R"	10-11
Staff "S"	10-11
Staff "T"	10-11
Staff "U"	10-11
Staff "V"	10-11
Staff "W"	10-11
Staff "X"	10-11
Staff "Y"	10-11
Staff "Z"	10-11